

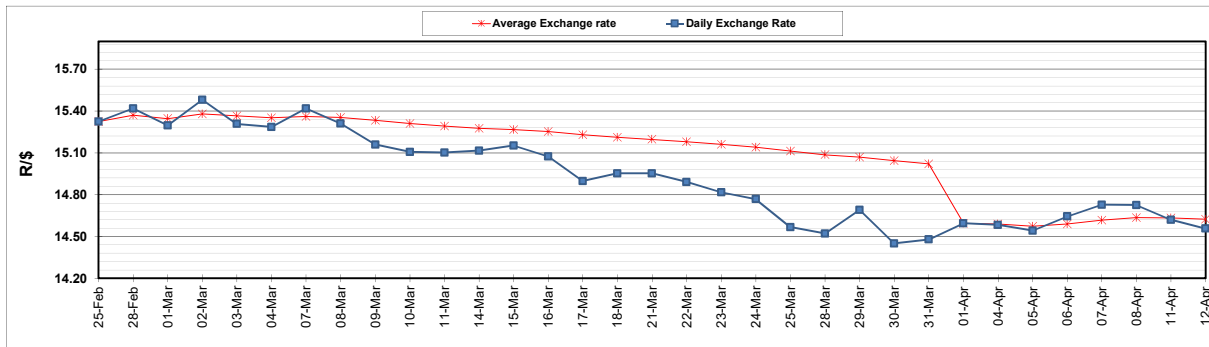
	PETROL 95 ULP	PETROL 93 ULP & LRP	DIESEL 0.05%	DIESEL 0.005%	ILL. PAR.
GAUTENG PUMP PRICE (SA c/l) AS FROM 06/04/2022	2,196.000	2,163.000	-	-	-
WHOLESALE PRICE (SA c/l) AS FROM 06/04/2022	-	-	2,101.440	2,123.840	1,584.688
SINGLE NATIONAL MAXIMUM RETAIL PRICE	-	-	-	-	2,045.000
BASIC FUEL PRICE - 12/04/2022 (SA c/l)	1,171.831	1,154.304	1,368.614	1,379.534	1,313.039
PRESS RELEASE CONTRIBUTION TO BFP 06/04/2022 - 12/04/2022 (SA c/l)	1,278.710	1,255.710	1,402.630	1,425.030	1,363.128
UNIT OVER/(UNDER) RECOVERY - 12/04/2022 (SA c/l)	106.879	101.406	34.016	45.496	50.089
AVERAGE BASIC FUEL PRICE 01/04/2022 - 12/04/2022	1,183.819	1,163.685	1,371.119	1,384.536	1,341.300
AVERAGE UNIT OVER/(UNDER) RECOVERY 01/04/2022 - 12/04/2022	27.976	28.110	(79.114)	(76.131)	(77.922)

ANALYSIS MOVEMENT OF AVERAGE OVER/(UNDER) RECOVERY

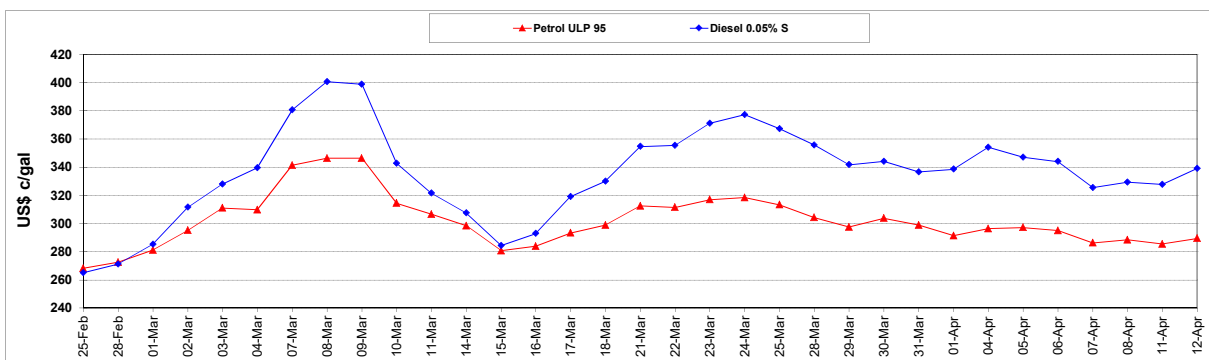
	PETROL 95	PETROL 93	DIESEL 0.05%	DIESEL 0.005%	ILL. PAR.
- MOVEMENT IN INTERNATIONAL PRODUCT PRICES	(4.194)	(3.513)	(116.374)	(113.756)	(114.372)
- MOVEMENT IN EXCHANGE RATE	32.170	31.623	37.260	37.625	36.450
AVERAGE UNIT OVER/(UNDER) RECOVERY 01/04/2022 - 12/04/2022	27.976	28.110	(79.114)	(76.131)	(77.922)

R/\$ EXCHANGE RATE - (R/\$14.5563 - 12/04/2022)

EXCHANGE RATE USED IN BASIC FUEL PRICE



INTERNATIONAL PRODUCT PRICES OF BASKET USED IN BASIC FUEL PRICE



BASIC FUEL PRICE IN SA CENTS PER LITRE

